

# PLANNING MINNESOTA



American Planning Association  
Minnesota Chapter

*Making Great Communities Happen*

A Publication of the Minnesota Chapter of the American Planning Association

Spring-Summer 2023



# PLANNING MINNESOTA



American Planning Association  
Minnesota Chapter  
Making Great Communities Happen

A Publication of the Minnesota Chapter of the American Planning Association

May-June 2023

Volume 42, Number 1

## Inside this Issue

### Chapter Updates

[President's Desk](#) .....Page 3

[Vice President's Update](#) .....Page 4

[Women in Planning Update](#).....Page 5

[State Conference Preview](#) .....Page 6

[DEI Committee Update](#).....Page 7

[Emerging Planners Update](#) .....Page 7

[FAICP Update](#).....Page 8

[Legislative and Law Update](#).....Page 9

[Spring Workshop Recap](#).....Page 10

### District News

[Southwest District Update](#) .....Page 12

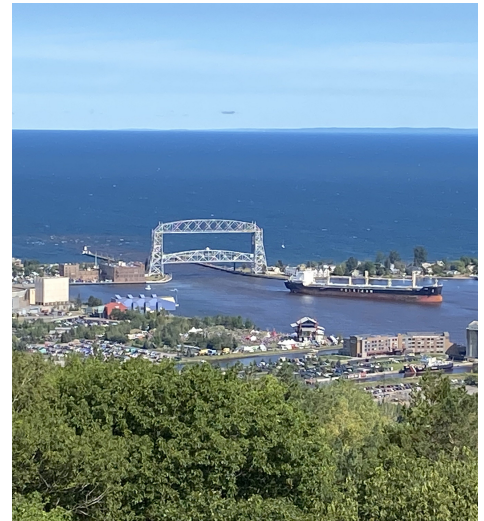
[Northwest District Update](#).....Page 12

[Minnesota Planner Update](#) .....Page 13

### Resources and Reports

[Selected Resources](#).....Page 15

[Jobs and Opportunities](#).....Page 17



Published by: The Minnesota Chapter of the American Planning Association (APA MN) publishes this newsletter on a biannual basis.

Submissions: We welcome articles, letters to the editor, photos, calendar items, project profiles, planners on the move items, and other news. Send all submissions via e-mail to: [apamnnewsletter@gmail.com](mailto:apamnnewsletter@gmail.com)

APA MN DISCLAIMER: The views expressed in articles published on the website ([minnesota.planning.org](http://minnesota.planning.org)) or in this newsletter are those of the authors. They do not necessarily represent the views or opinions on APA MN or its staff and contractors, or any entity of, or affiliated with, the APA MN. Any questions or comments may be directed to the newsletter editors or the president of APA MN.



**Women in Planning** Page 5



**Spring Workshop** Page 10



Follow us on Twitter at [@apa\\_mn](https://twitter.com/apa_mn)



[Facebook.com/planningmn](https://Facebook.com/planningmn)

# CHAPTER UPDATES

## PRESIDENT'S DESK

At our most recent board meeting, one member expressed that they felt there was more going on at APA Minnesota than they've seen in a while, and I can't disagree! It has been an enormous joy to watch all of our board members be so engaged and hard at work to provide quality opportunities for planners to connect, learn and grow.

It's a huge priority for me to celebrate and thank our executive committee, board members and volunteers. As an organization with nearly 800 members, it really amazes me what we are able to do with only one paid staff member and a group of fantastic volunteers. For this president's column, I'd love to highlight some work happening across the organization, and encourage you to find a space for yourself in amongst all of it!

- In 2022 and 2023, co-chairs of our Emerging Planners Group, Ally de Alcuaz and Harry Davis led a fantastic mentorship program which had mentors and mentees of all ages. This program was a great opportunity to network and share knowledge with those coming into the planning field and a space where I met so many planners I had never interacted with before. As they roll this program out next year, I highly recommend participating!
- This legislative session met many of us with some anxiety at the rapidness and sheer amount of legislation being pushed through. Our legislative and law committee added some new faces as co-chairs in Alex Schieferdecker and Elena Fransen. Alex in particular was instrumental in the work our chapter did to help lobby on changes to MERA. This committee is hard at work in preparing for the 2024 session, and if you are interested in policy and being involved in their committee, now is a great time to reach out one of them.
- For members in Greater Minnesota, you may have seen a short survey from your District Directors who are hard at work trying to hone in on what might best serve you! If you're interested in connecting with planners in your area – don't hesitate to reach out to your District Director.
- Spring weather always brings out some of the best APA events; the Spring Workshop hosted by Patrick Boylan and Leila Bunge, toured development at the West End, and was completely sold out, and it was perfect weather for the annual Twins game!
- Conference planning continues, conference co-chairs Brian McCann and Jared Johnson (with great help from Executive Director Andrea Jauli and Vice President Mike Palermo) are ready to host all of us for a great couple of days in Saint Cloud, MN this fall.
- Our Women in Planning Committee (lead by Lori Johnson and Reeve Needham) and Diversity and Equity Committee (lead by Michelle Lincoln and Emily Goellner) continue to put out great content and events.



This is a non-exhaustive list of everything some pretty amazing people are working on. If you recognize someone on this list, from work or school, give them props! All of this gets done in addition to work and family and anything else they have going on. I'll say that from my experience, one of the best ways someone can appreciate this effort is by giving up a little of your time to attend an event or engage with what is being shared by any one of these committees.

Finally, thank you – for being a member of APA Minnesota and for supporting our board in whatever way you do!

Best,

PeggySue Imihy Bean, AICP  
President – APA Minnesota

# APA MN VICE PRESIDENT STRATEGIC PLANNING UPDATE

By Michael Palermo, AICP

APA Minnesota is at the onset of creating a new strategic plan. As planners we know how invaluable it is to have an engaged community to help develop and take ownership of the plan's implementation. I invite our members to be involved with the development of the plan which is built around our organization's mission of Creating great communities for all. The plan will reflect our organization's core values to the right.



What this means in the context of Minnesota planning is where you come in. Look for more information in upcoming email blasts, newsletters, and the fall conference on how to help provide input and guidance on the strategic plan.

We hope through this process to inspire members to get involved in the wide variety of activities APA MN provides whether it be participating in one of our committees, attending a social event, or learning from experts in our field. To be more welcoming to membership and encourage involvement in the numerous activities of APA MN we are rolling out some documents outlining what exactly our organization does. We will be simplifying our website and continue to grow in our social media presence.

If you are looking to get more involved or just looking for more information about activities and programming please checkout [Minnesota.Planning.Org](http://Minnesota.Planning.Org) or do not hesitate to reach out to me at [Michael-Palermo@outlook.com](mailto:Michael-Palermo@outlook.com).

## People Centered

Equity

Diversity

Inclusion

## Stimulating Learning & Growth

Agility

Innovation

Ethics

## Paying It Forward

Resilience

Stewardship

Future Focus

**Kimley»Horn**  
Expect More. Experience Better.

**Resilient Communities Project**  
Building Community-University Partnerships for Resilience

[rqp@umn.edu](mailto:rqp@umn.edu)
[@RCPumn](https://twitter.com/RCPumn)
[612-625-7501](tel:612-625-7501)

For more information or to apply, visit [z.umn.edu/applyrcp](http://z.umn.edu/applyrcp)

# APA MN WOMEN IN PLANNING CHAPTER UPDATE

By Lori Johnson and Reeve Needham

To kick off the year, the Women in Planning Committee hosted a leadership event in January. We had approximately 30 attendees for the presentation over lunch hosted at WSB. Participants learned from Dave Bartholomay about adapting leadership in a volatile, uncertain, complex, and ambiguous world. Qualities such as character, optimism, authenticity, servant leadership, and trust were all discussed as important qualities to develop leadership skills.

We are looking forward to the conference this fall in St Cloud! Stay tuned for two sessions hosted by the Women in Planning committee. In efforts to improve communication, we've launched a new newsletter format. The National APA Women

and Planning Division has started a petition to amend the APA bylaws to prohibit sexual harassment and we encourage everyone [to learn more and sign the petition](#).

Co-Chairs Lori and Reeve and working with [100 Rural Women](#) to host an event later this year, aimed at sharing more about planning and inspiring more people to get involved in the profession and local leadership roles. Later this summer, the national [APA Women and Planning Division](#) is hosting a Kayak and Coffee event at Pickerel Lake in Lilydale.

Stay tuned for more upcoming events in 2023!

*Do you have ideas for future topics or events? Would you like to be added to the committee newsletter? Reach out to [Lori](#) or [Reeve](#).*



Cultural Heritage Planning  
Interpretation & Exhibit Design  
Cultural Resource Management



106group.com |



**LHB**  
PERFORMANCE  
DRIVEN DESIGN.

- Architecture
- Landscape Architecture
- Urban Design & Planning
- Zoning Codes
- TIF Analysis

Michael Lamb, AICP  
612 . 766 . 2830  
mike.lamb@LHBcorp.com

# 2023 State Conference Preview

We are headed to St. Cloud this year for our state conference! Please join us at the River's Edge Convention Center October 4-6 as we look to keep the energy going from the Duluth conference last year.

The conference committee would like to thank everyone who submitted sessions this year! We are busy reviewing proposals and will look to have the conference schedule out ASAP. We will be using the Whova app again for all things conference related.

Some conference highlights to look forward to in St. Cloud:

- 40+ Sessions
- St. Cloud Mobile Tours
- Revamped Awards Dinner
- Keynote Speaker Lunch
- Social Events

## Conference Information



Room blocks will be reserved at the Best Western Kelly Inn (attached to the convention center). Keep an eye out soon for when the room block opens up as well as conference registration.

APA MN Website contains all the updated information for the 2023 State Conference.

There are no plans to offer virtual sessions. We hope you join us in-person!

[APA Minnesota Chapter \(planning.org\)](http://planning.org)

Conference Co-Chairs:

Brian McCann (City of Victoria)

Jared Johnson (City of Farmington)

Conference Adviser:

Michael Palermo (City of Bloomington)

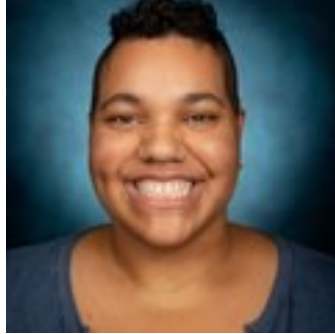
## Interested In helping plan the conference?

The conference is only a few months away and we always need extra resources to help the conference be the best it can be! If interested in helping the conference committee, please reach out to Brian McCann at [bmccann@ci.victoria.mn.us](mailto:bmccann@ci.victoria.mn.us) or Jared Johnson at [jjohnson@farmingtonmn.gov](mailto:jjohnson@farmingtonmn.gov)

# APA MN DEI COMMITTEE CHAPTER UPDATE

By Michelle Lincoln and Emily Goellner, AICP

In partnership with WTS and ACSE, we have organized spots on the [Minnesota Humanities Center Bdote Tour](#) on September 15th. Spots are limited, but attending the tour will be free to MN APA Members. Registration will open later in the Fall.



We have monthly open-forum meetings to serve planning professionals that are grappling with issues in their work and looking for resources, share successes, discuss current planning events, and connect with other members. Our next regular meeting is Thursday, August 17 at 1 PM; we hope to see you there!



We also need volunteers to help organize Equity centered webinars and programming; these events can vary from Lunch and Learns to conference sessions and attendees would be eligible for AICP Equity CM credits.

If you are interested in any of these opportunities or have questions, please email us at [mnapa.dei@gmail.com](mailto:mnapa.dei@gmail.com).



# APA MN EMERGING PLANNERS CHAPTER UPDATE

By Ally de Alcuaz and Harry Davis, AICP

The Emerging Planners Group now has an email list. Please sign up at the link below to receive information about upcoming events, the mentorship program, job opportunities, and more! We encourage everyone to sign up, emerging and established planners.



[Click here](#) to access form

## 2022-2023 Mentorship Program

The 2022-2023 APA MN Mentorship Program wrapped up in April with a final event at the Downtown Improvement District space on Nicollet Avenue in downtown Minneapolis. Participants engaged in a lively conversation about DID's work, as well as the future of downtown Minneapolis.



The mentorship program will begin again in the fall.

## MN APA Emerging Planners Interest Form

Please complete the following form to sign up for the MN APA Emerging planners email list and/or indicate your interest in the MN APA Mentorship Program.

Emerging Planners Co-Chairs:  
Ally de Alcuaz ([alexandra.dealcuaz@state.mn.us](mailto:alexandra.dealcuaz@state.mn.us))  
Harry Davis ([harry.davis@bolton-menk.com](mailto:harry.davis@bolton-menk.com))

[Switch account](#)



\* Indicates required question

Name \*

Your answer

# APA MN FAICP COMMITTEE

## FAICP NOMINATIONS UPDATE



Dear APA Minnesota members,

We are pleased to facilitate the Fellows of the American Institute of Certified Planners (FAICP) nominations for the American Planning Association Minnesota Chapter (APA MN). Induction to the College of Fellows is among the highest honors in the urban planning field. We hope that you will consider nominating your AICP member colleagues for the 2024 Class of the FAICP. Self-nominations are welcome as well. Use [the list](#) of current Minnesota AICP members who, based on at least 10 years as an AICP member, qualify for nomination to FAICP.

APA chapters have the opportunity to nominate their members for FAICP. If you are interested and willing to nominate someone (including yourself), we ask that you complete the following steps in order to advance a nomination

1. Complete the [APA MN FAICP Expression of Interest Form](#).
2. Identify a Candidate Advocate who agrees to support the nomination by working closely with the candidate throughout the nomination preparation process as an advisor/mentor. The Candidate Advocate should be familiar with the candidate's career. Indicate the Candidate Advocate's name on the

form noted above

3. Submit your Expression of Interest Form to Peter Brown ([peter@peterhendeebrown.com](mailto:peter@peterhendeebrown.com)), Barbara Dacy ([dacy439@gmail.com](mailto:dacy439@gmail.com)), and PeggySue Imihy Bean ([pimihy@hopkinsmn.com](mailto:pimihy@hopkinsmn.com)) ASAP.

Candidates selected for support by APA MN will be advanced for approval by the APA MN Board and will receive support in developing application materials for submission to FAICP by the August 30, 2023, deadline. APA MN has been successful in advancing a number of its members through the Fellows process. A list of all Fellows inducted to FAICP is available at: <https://planning.org/faicp/>

If you have any questions about the process or qualifications, please feel free to contact us. We look forward to learning more about your great contributions to the planning field.

Best,

Peter Brown, FAICP

Barbara Dacy, FAICP

PeggySue Imihy Bean, AICP





# APA MN LEGISLATIVE & LAW

## SURVEY RESULTS UPDATE

By Alex Schieferdecker and Elena Fransen

Dear APA Minnesota members,

Thank you from the APA MN Leg/Law Committee to the 83 planners who completed the sample policy survey that was shared in previous newsletters. Your responses were extremely informative and will help guide our organization's engagement in the legislative process next year.

Respondents voiced strong support overall for policies that would make building code enforcement more uniform, as well as policies that would allow cities other than Minneapolis and St. Paul to more quickly seize tax delinquent properties that are held by large landlords. It's no surprise that these two ideas were the most popular, as they emerged directly from the committee in response to real issues planners are encountering across the state.

In contrast, respondents voiced strong opposition to policies that would place caps on the amount of impact fees charged to new development and policies that would limit the ability of communities to regulate certain building materials. Both of these policies have been proposed in past legislative sessions in response to the perception that some municipalities are using these tools to drive up the cost of development and exclude affordable development. But as the survey responses show, planners are wary of the scope of these types of statewide restrictions.

Respondents were mixed on policies that would preempt local zoning codes to allow ADUs and 2-4 plexes in all residential land areas, or to preempt parking minimums in transit-rich areas. All of these questions generated slightly more responses in favor than against, but they were clearly controversial. These types of policies have been in the news a lot recently, as states from California to Montana have decided to override local control in order to prompt more home construction. It's clear that these policies are controversial among planners, especially when they are imposed at the state level. The Leg/Law Committee will pay special attention to the language of these types of preemptions, should they be proposed and advanced next year.

Finally, the issue of single stair/point access buildings drew by far the most responses of "Neutral/Need To Know More." This is certainly a topic that the committee has noted where further learning opportunities might be of benefit to the planning community.

Once again, thank you to everyone who filled out the survey. If you have further feedback on the survey or these broader issues, please don't hesitate to email [info@planningmn.org](mailto:info@planningmn.org)

# APA MN PROGRAM COMMITTEE

## SPRING WORKSHOP AT THE WEST END: A SMASHING SUCCESS!

By: Patrick Boylan, AICP and Leila Bunge, AICP

The Spring Workshop has been held since 2012 and this year's mobile tour/spring workshop was held May 5, 2023. A walking tour focused on St. Louis Park's West End.

**Leila Bunge** (Kimley-Horn) and **Patrick Boylan** (Metropolitan Council) organized the mobile workshop tour that garnered ~25 attendees plus speakers.

Planners gathered at HDR's office, which was one of the office properties developed by The Excelsior Group within the past couple years in the West End. Leila and Patrick welcomed everyone and gave a brief overview of the tour activities planned and information on other upcoming APA activities. **Sean Walther** (planning manager/deputy community development director for the City of St. Louis Park) provided a brief overview of the history of the West End development and planning origins.

The tour moved outside, and **Jessica Laabs** (Planner with Kimley-Horn) provided the background on why the proposed development at the time triggered an Alternative Urban Areawide Review (AUAR) and the subsequent AUAR updates that followed over the years. She reviewed the environmental review resource topics that were the focus of the AUAR updates, including traffic and water resources.

**Sean Walther** continued the walking tour and pointed out to participants along the way the key development, architectural, design, and infrastructure elements of the site. Sean presented on site plan development, site design and the ongoing partnership with developer Chris Culp (Excelsior Group).

Next, **Chris Culp** (Excelsior Group), presented on the developer's perspective of working with both the City of Golden Valley and St. Louis Park staff and city councils and navigating the different requirements for developing the site. There was a robust discussion and at-

tendees asked questions related to: why Excelsior Group picked this location, types of development, funding, unit pricing, and sustainability considerations.

Wrapping up the day was a presentation by **Jason Zimmerman** (Planning Manager at Golden Valley). Jason discussed details related to signage, public art, and partnerships with the City of St. Louis Park and the developer for decision-making of the site design.

The optional after-event took place at The Local in the West End. Participants enjoyed appetizers and beverages afterwards and networked together after the event.

The event utilized listening devices from AudioEquip, which was handy when vehicles were present (noise from traffic was thwarted and all could hear the event speakers!)





L to R: Jessica Laabs, Jason Zimmerman, Sean Walther, Leia Bunge, Patrick Boylan



**Affable Event Organizers**  
Patrick Boylan and Leia Bunge



**A unique project site:** the municipal line cuts through a residential building and a parking ramp. Planners were compelled to line up on the city boundary with participants facing St. Louis Park (Golden Valley was behind the line)

# DISTRICT AND STATEWIDE NEWS

## SOUTHWEST UPDATE

By Charles Androsky, AICP

The Southwest District continues to host a diverse range of community planning, transportation planning, and economic development activities. This includes a flurry of comprehensive planning at the municipal level. Per state statute, Minnesota communities outside the Metro can choose to update their plans in their own schedule. Many communities across the southern part of the state have elected to update their plans to help set a long-term vision for growth and prosperity. The City of Worthington recently initiated an update with a strong focus on engaging all residents of its relatively quickly growing population (over nine percent from 2010-2020). The City of Marshall recently implemented a new comprehensive plan update. The plan has a strong emphasis on creating a livable community with amenities which attracts a vibrant and dynamic workforce to drive economic growth. Other Southern Minnesota cities updating their plans include Northfield, Owatonna, and Lewiston.

In the transportation realm, Blue Earth County is currently collaborating with residents and stakeholders to develop an update to its Long Range Transportation Plan. The plan will help define priorities for its multimodal transportation system, which serves commuters, people traveling to medical, commercial, and recreational destinations, and a range of commerce-related travel including heavy agricultural, mining, and manufacturing equipment. The entire southern half of the state is anticipated to benefit from Highway 14's expansion to a full four-lane cross section from New Ulm to Rochester. Involving countless planning professionals from local, state, and federal agencies, this decades-long goal will be met by the end of 2023. Anticipated benefits include a safer, more efficient, and more reliable artery connecting the region.

The largest city in the district, the City of Mankato, is seeing renewed interest in residential use in its city core. The city is working with a range of developers to oversee tens of millions of dollars in private investment, including "The Burton," a planned \$38 million apartment complex downtown. This development, combined with numerous recent and forthcoming residential projects, will introduce hundreds of new units of housing stock to the city core.

## NORTHWEST UPDATE

By Dr. Mitchell Berg

Dear APA MN Members,

There is lots to share from the NW region. First and foremost, I wanted to let you know I'm working to put together an APA MN NW regional activity, and hopefully that can occur within the next few months. So, please pay attention to your email, as I hope to be able to announce our first post COVID-19 in-person regional event.

Secondly, for those who do not know about me my day job consists of serving as the Associate Director for the University of MN Crookston Veden Center for Rural Development. I am excited to announce that we are partnering with the Design for Community Regeneration (D4CR), an initiative of the Minnesota Design Center at the University of Minnesota. The purpose of D4CR is to partner with communities in a process of imagining and planning their regenerative and resilient future. D4CR addresses food, water, and energy security while increasing economic opportunities, social cohesion, and finding low cost housing options. Communities participate in a ground-up "Geodesign" process assisted by geographic data, and a dashboard for community goals. After a successful pilot in the City of Warren, and with a grant from the NW Regional Sustainable Development Partnership, D4CR Northwest Minnesota will soon begin seeking out additional communities to partner within the region. To learn more and join our D4CR Network Mailing list to hear about how you can be involved, visit <http://design4cr.net>

Lastly, I wanted to announce that I will soon be resigning as the NW MNAPA board, due taking a Clinical Assistant Professor appointment with Indiana University Bloomington to teach local government and community development. I will be teaching online this fall, but my wife and I will be relocating to Indiana if not before the New Year, soon after. Therefore, if you have any interest in serving on the board, and would like to learn about the role please feel free to reach out to me at [berg0393@umn.edu](mailto:berg0393@umn.edu) or by phone at 218-850-4885.

## MINNESOTA PLANNER UPDATE

### TWIN CITIES PLANNER HELPS GUIDE SUSTAINABILITY PLANNING IN LOS ANGELES

APA MN member Mark VanderSchaaf spent his career in the Twin Cities, as both the economic planner for the Saint Paul Department of Planning and Economic Development (1986-2004), and the regional planning director for the Metropolitan Council (2004-2016). In retirement he sought volunteer opportunities to share his experiences with a wider audience. That led initially to him being elected the national chair of APA's Regional and Intergovernmental Planning Division, and more recently, to a gig with a Los Angeles organization known as Pando Populus (<https://pandopopulus.com/>) that promotes sustainability projects in that region.

When Mark became aware of Pando Populus in early 2022, he was fascinated with their success in inspiring numerous undergraduate college student projects based on the Los Angeles County sustainability plan, a plan known as *OurCounty* (<https://ourcountyla.lacounty.gov/>). On the one hand, he was impressed with the wisdom and comprehensiveness of this plan, produced by the most populous county in the U.S. (With 10 million people, Los Angeles County constitutes the majority of the Los Angeles metropolitan area and has nearly twice as many people as the second most populous county in the U.S.) But as an experienced planner, he also knew that there were undoubtedly other plans in the region meriting consideration by L.A. people interested in sustainability.

And so he volunteered to work remotely (via Internet and Zoom) to track down and summarize relevant Los Angeles area sustainability plans, a task which surprisingly had not been done before. The result was a free e-book, *Sustainability Planning in Metropolitan Los Angeles: An Overview*, authored by Mark and published by the Chief Sustainability Officers Task Force of Los Angeles County in April at a ceremony held at Caltech that Mark was able to attend. The event speaker lineup included Mark, along with the president of the Los Angeles City Council, the emeritus Los Angeles City Council environmental policy expert, and three of the five Los Angeles County supervisors.

Mark's analysis began with the perspective of someone passionate about sustainability within the Los Angeles city limits and asked how many major sustainability



plans were applicable to that situation. The answer he came up with was thirteen, identified as follows:

#### **Multi-County Regional Sustainability Plans**

- Los Angeles Region Report of California's Fourth Climate Change Assessment*
- Connect SoCal* plan of the Southern California Association of Governments
- Air Quality Management Plan* of the South Coast Air Quality Management District
- Regional Needs Assessment* of the Metropolitan Water District of Southern California
- Aspire 2045* plan of the Southern California Gas Company

#### **Los Angeles County Sustainability Plans**

- OurCounty* sustainability plan of Los Angeles County
- Integrated Water Management Plan* of Greater Los Angeles County
- Sixty Mile Circle* plan of the Los Angeles County Economic Development Corporation

# MINNESOTA PLANNER UPDATE

(CONTINUED)

## City of Los Angeles Sustainability Plans


- L.A.'s Green New Deal: Sustainability City pLAN and Resilient Los Angeles*
- Citywide and Community Elements of the Los Angeles General Plan*
- One Water LA 2040 Plan of the Los Angeles Department of Water and Power, and Los Sanitation and Environment*
- Power Strategic Long-Term Resource Plan of the Los Angeles Department of Water and Power*
- Los Angeles Biodiversity Report of Los Angeles Sanitation and Environment*

While this policy handbook approaches sustainability through the lens of those within Los Angeles city limits, it also provides pointers to sustainability plans in the other counties and key cities of metropolitan Los Angeles. In addition, it helps to frame sustainability planning in the region via a discussion of the history of sustainability planning internationally, nationally, and throughout the state of California. Finally, it presents summaries of highly-regarded historical and social science interpretations of the importance of the Los Angeles region.

This policy handbook has already been well-received within Metropolitan Los Angeles. For example, the former staff expert on environmental policy for the Los Angeles City Council, Andy Shrader, has stated that "it is gratifying and heartening to see so much of our work collected in one place, accessible as a useful overview for other municipalities to follow, to help activists advocate, and to inspire future projects."

To continue advancing this work, author Mark Vander-Schaaf will be conducting training sessions later this year, and is now embarking on Part Two of the policy handbook. With its focus on thirteen adopted plans, the current Part One focused on authoritative products within the region. Part Two will shift the focus to processes by taking a close look at the creation of the 2024 update of the Southern California Association of Government's *Connect SoCal* transportation plan and sustainable communities strategy. A premise of the Part Two study is that this plan will be among the first in the U.S. to address in depth the post-COVID, post-George Floyd, and extreme climate change world that is transforming urban America in ways we are only beginning to understand. To generate consideration of such issues, a discussion of the two-part *Sustainability Planning in Metropolitan Los Angeles* policy handbook is planned for the Regional Futures Forum prior to the 2024 National Planning Conference here in Minneapolis.

To obtain your copy of this policy handbook, contact Mark at [markevds@gmail.com](mailto:markevds@gmail.com)



Climate Planning & Consultation

Energy Planning

Electric Vehicle Readiness



## Achieve Your Climate & Energy Goals

**Brian Ross**, AICP, LEED  
bross@gpisd.net  
612-767-7296  
Learn more at:  
[BetterEnergy.org/#our-services](https://www.betterenergy.org/#our-services)



**wsb**

More is possible when we work together.

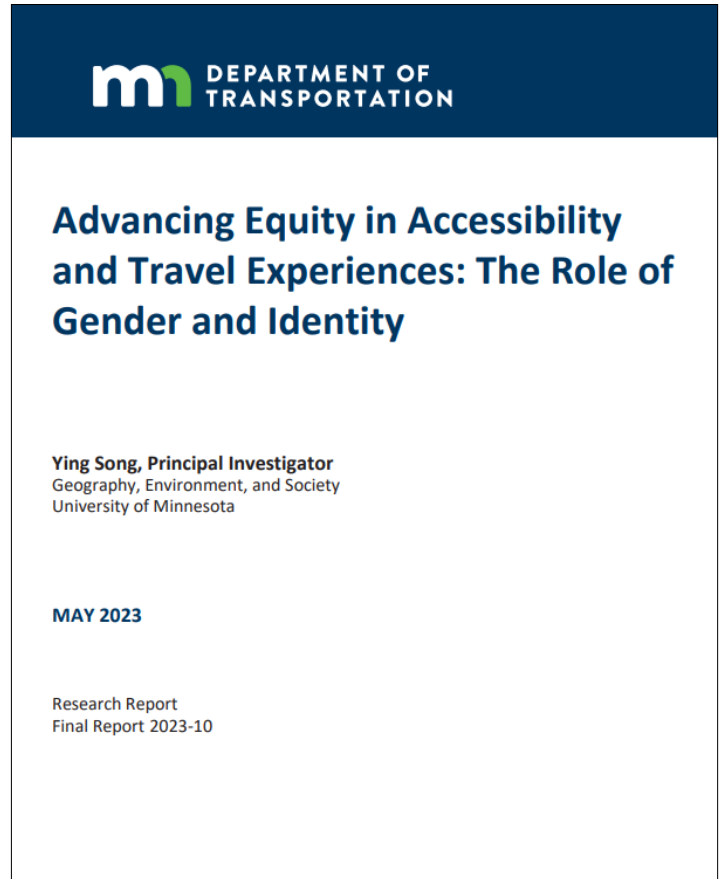
Community solutions for the spaces, places and systems that support our lives.

# RESOURCES AND REPORTS

## THE ROLE OF GENDER IDENTITY IN TRAVEL BEHAVIOR

Ensuring the transportation system does not disproportionately impact underserved or underrepresented communities requires an accurate understanding of the needs and experiences of these communities. Previous research on gender and travel has largely defined gender as binary—female and male—which overlooks travel needs and experiences of non-binary people. New insight into the impacts of gender identity on travel behaviors and experience will support MnDOT’s efforts to advance transportation equity.

Nearly 300 participants representing a diverse group in terms of gender, geography and other social characteristics kept travel diaries on a smartphone app for two weeks. Participants recorded the purpose of their trips and the emotions—positive and negative—they experienced during the trips, and answered questions about gender identity, participation in daily activities and household tasks. Data from the travel diaries demonstrate that gender identity interacts with other individual characteristics such as race, employment status and family role in shaping experiences with the transportation system. For example, employed females with children shouldered more household tasks, including those involving travel, and Black females relied most heavily on public transit. Non-binary people had the worst reported subjective well-being when traveling due to a higher proportion of negative experiences during trips and daily activities.



To learn more, visit the [Minnesota Department of Transportation](https://www.mn.gov/transportation).

Questions? Contact [Erika Shepard](mailto:erika.shepard@mn.gov), Metropolitan Planning Program Coordinator



## Resources and Reports (continued)



### EQUITABLE COMMUNITY TOOLKIT

The recently updated [Fourth Economy Equitable Community Planning Toolkit](#) is the result of ongoing research, and contains resources developed to help leaders progress through their equitable planning goals and actions. It includes information on how communities across the United States are rising to meet the equity imperative, as well as tools to apply promising practices and systems change processes.

There is a growing interest and momentum in equitable community planning. The toolkit is designed for communities who may be at the beginning stages of equity planning as well as those where equity coalitions, groups, plans, and actions are well underway.



### COMPLETE STREETS BEST PRACTICES

Smart Growth America and National Complete Streets Coalition recently released a new report, [Best Complete Streets Policies 2023](#). This report evaluates and ranks the 157 Complete Streets policies adopted in the U.S. from 2019 to 2022; highlighting national trends and spotlighting the strongest policies and offering real-world examples of how these policies get passed. Currently, four Minnesota Complete Streets policies are included in this ranking, with the City of Burnsville receiving the highest score.

The report's release also includes access to the open-source framework used to score the policies. Anyone who wishes to evaluate their own policy can download the tool from the website [here](#).





# JOB OPENINGS AND RFPS

Job openings and requests for proposals are available on the APA MN website:

[https://www.planningmn.org/view\\_job\\_postings](https://www.planningmn.org/view_job_postings)

[https://www.planningmn.org/view\\_rfp\\_postings](https://www.planningmn.org/view_rfp_postings)

Recent job postings include:

- Minnesota Department of Transportation: Principal Planner
- Fargo-Moorhead Metropolitan Council of Governments: Assistant/Associate Transportation Planner
- City of Brooklyn Park: Program Assistant III Planning Community Development
- Minnesota Department of Natural Resources Parks and Trails Division: Principal Planner Off-Highway Vehicles
- City of Duluth: Director Planning & Economic Development
- City of Jordan: Planning Intern

Share in the enduring environmental, social and economic benefits of Minnesota's historical and cultural heritage.

**mn** DEPARTMENT OF ADMINISTRATION  
STATE HISTORIC PRESERVATION OFFICE  
[mn.gov/admin/shpo](https://mn.gov/admin/shpo)

We live, work and play where you live, work and play.



**BOLTON & MENK**  
Real People. Real Solutions.  
[Bolton-Menk.com](https://Bolton-Menk.com)

**L A N D F O R M**  
Your Partners in Planning  
From Site to Finish®

612.252.9070 [www.landform.net](https://www.landform.net)